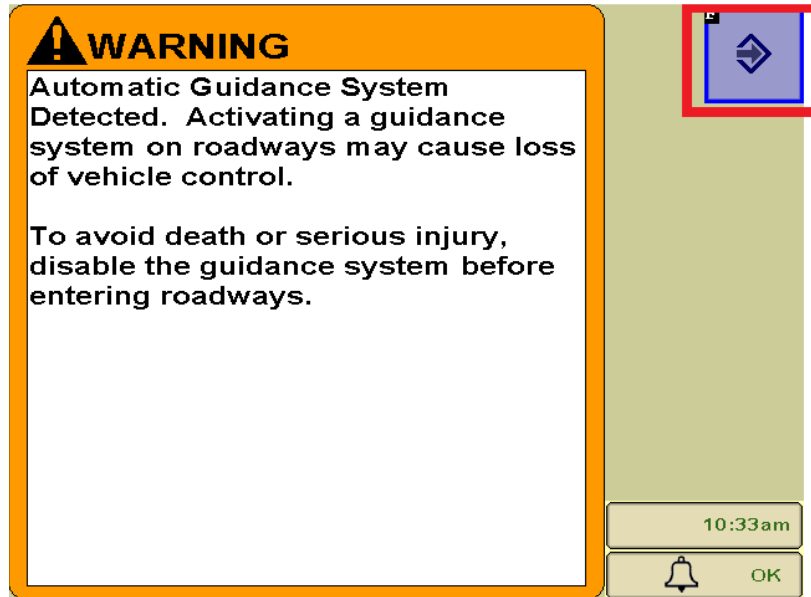


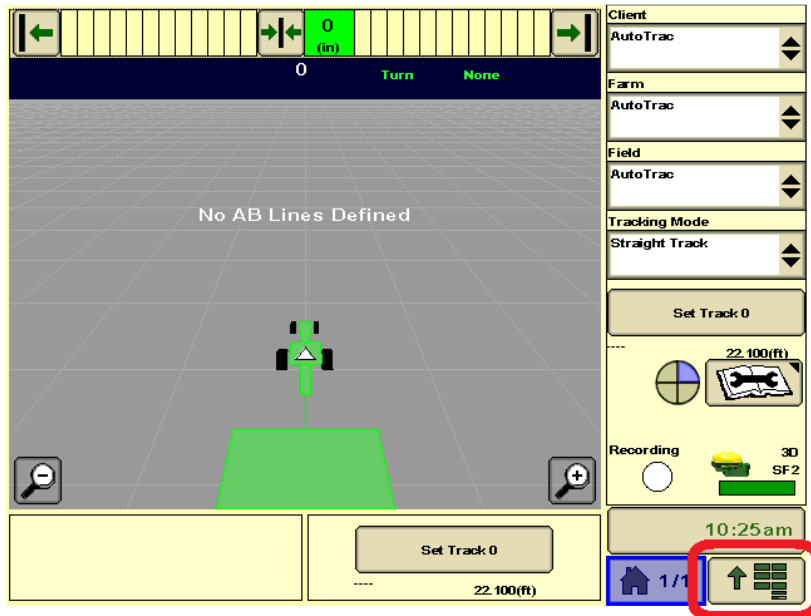


How to set an AB line with a 2600 or 2630 Display

1. Start Engine on Tractor. When this warning appears on the display press the button with the green arrow to accept the warning.



2. Press Main Menu Button.

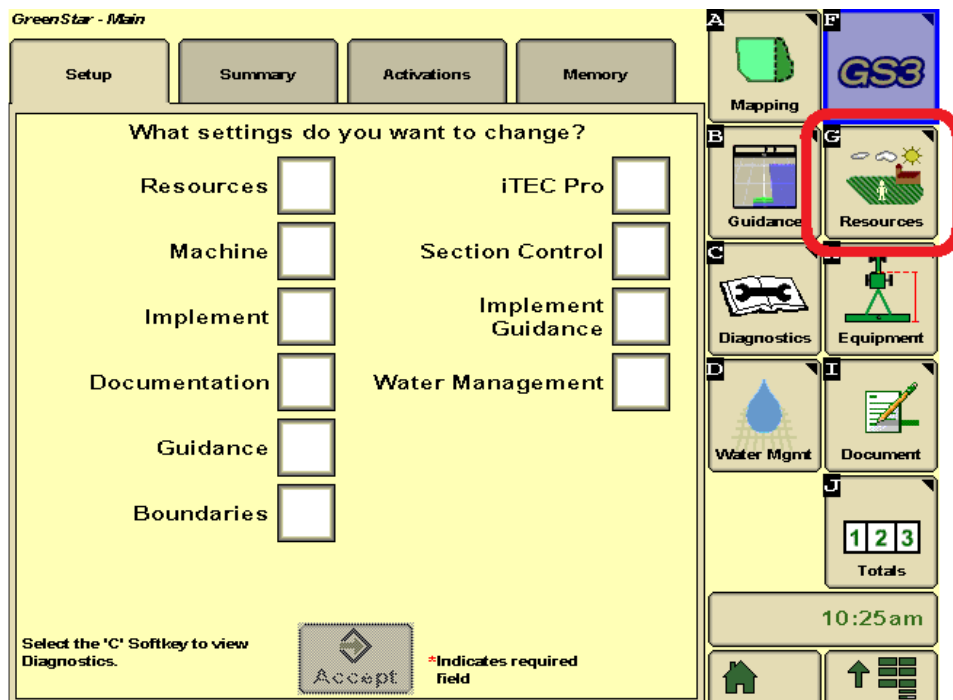




3. Press GS2 or GS3 Button.

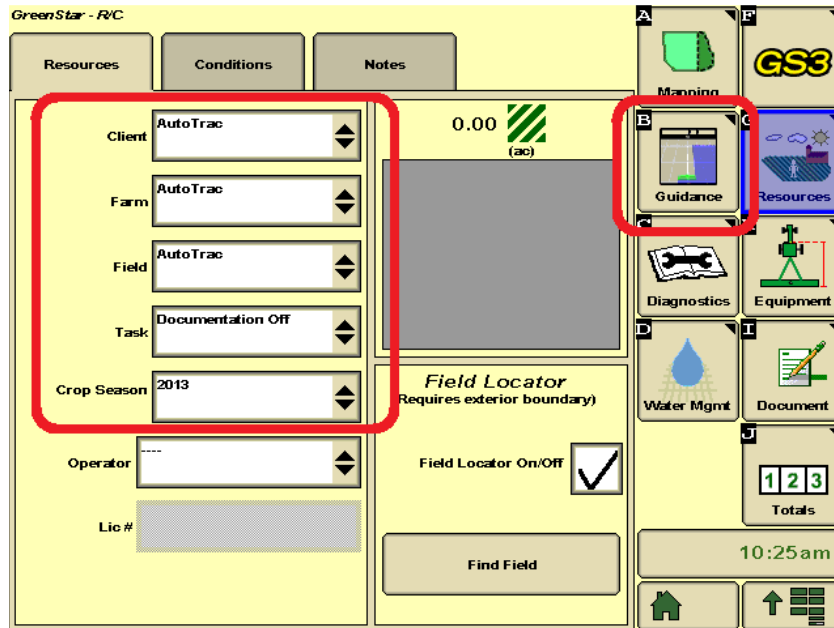


4. Press Resources Button (Letter G).

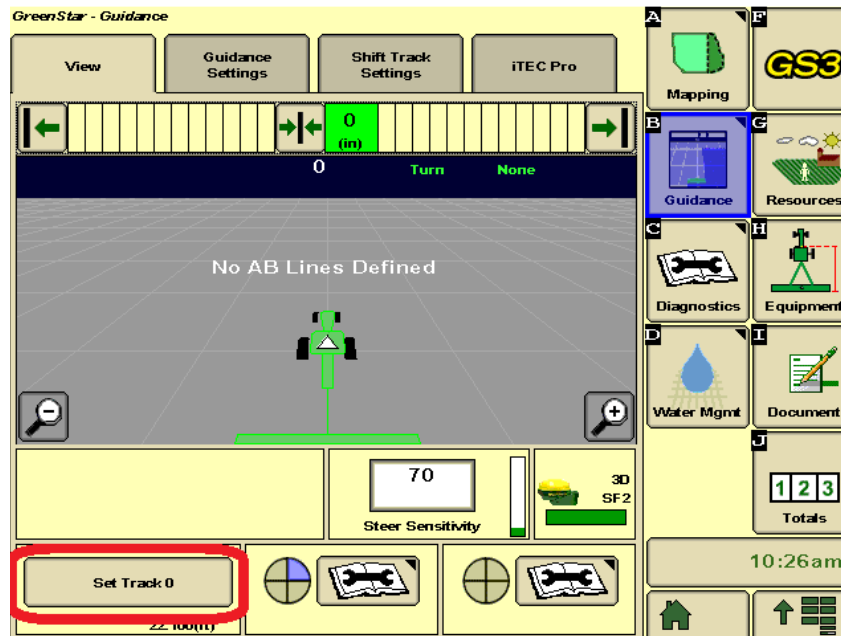




5. Make sure that “Client, Farm, Field, Task and Crop Season are filled out correctly. Then press the “Guidance” Button (Letter B).

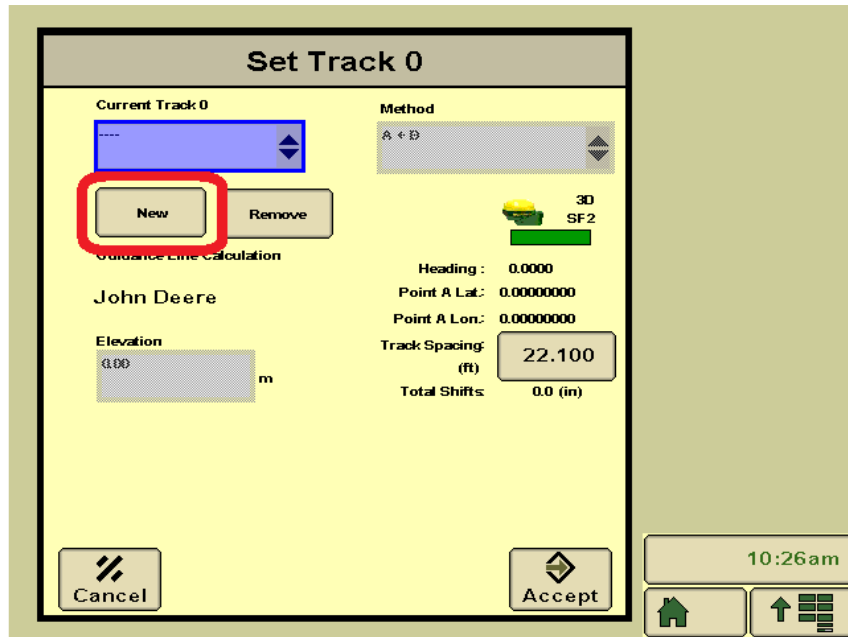


6. Press “Set Track 0” Button.

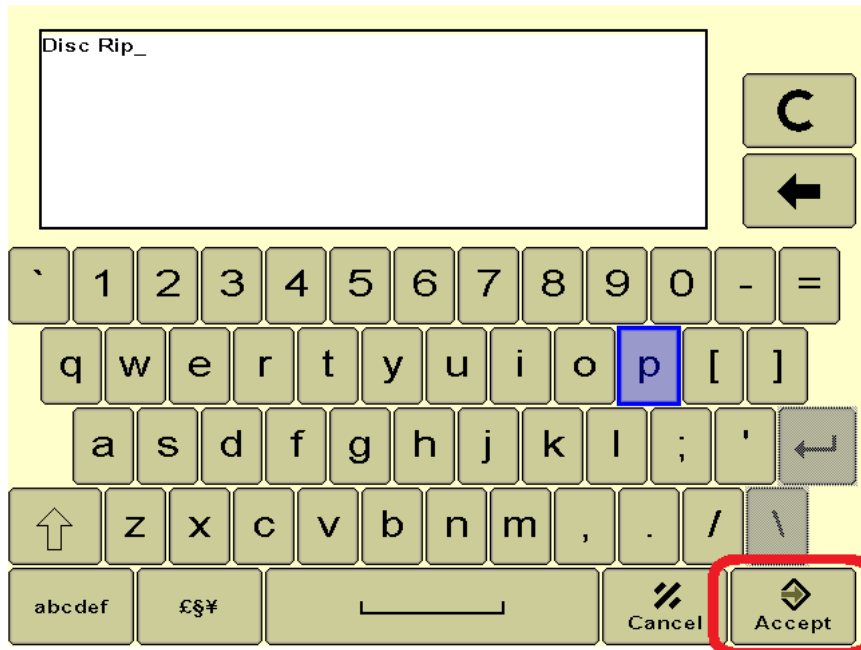




7. Press "New" Button.

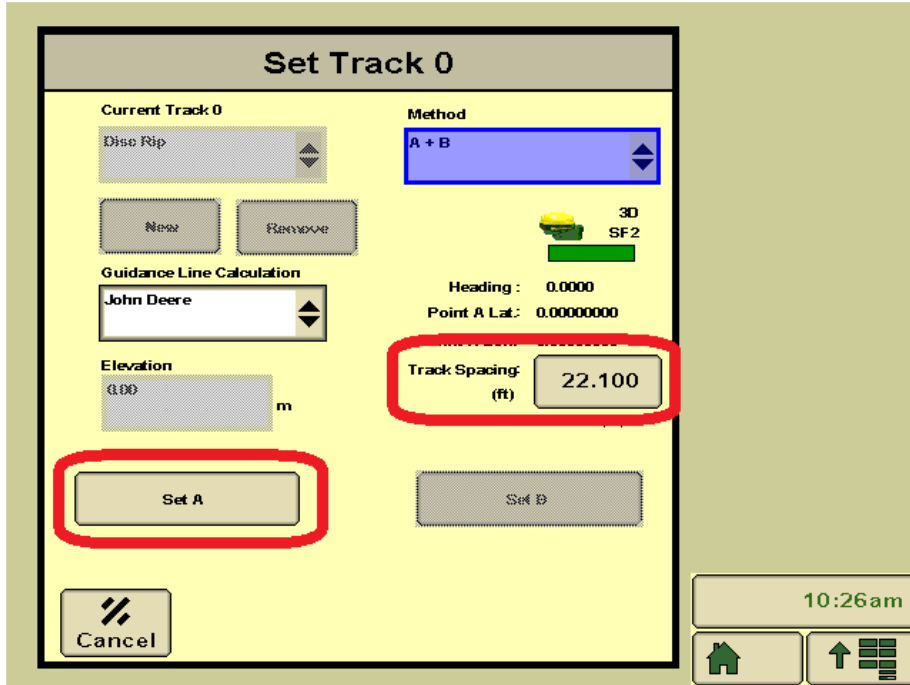


8. Type in Track Name and press the "Accept" Button.

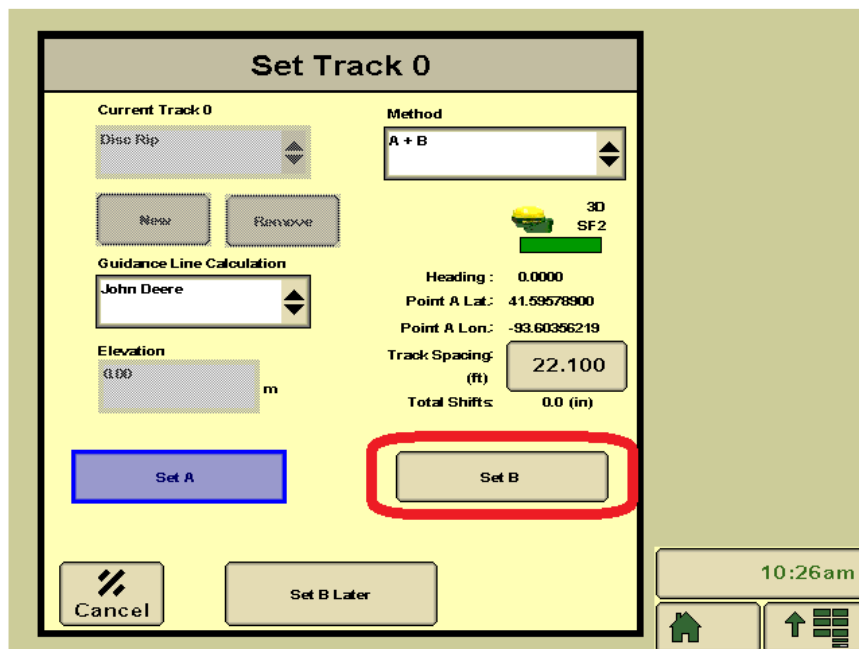




9. Press “Set A” Button to set point A. If you need to adjust track spacing press “Track Spacing” Button.

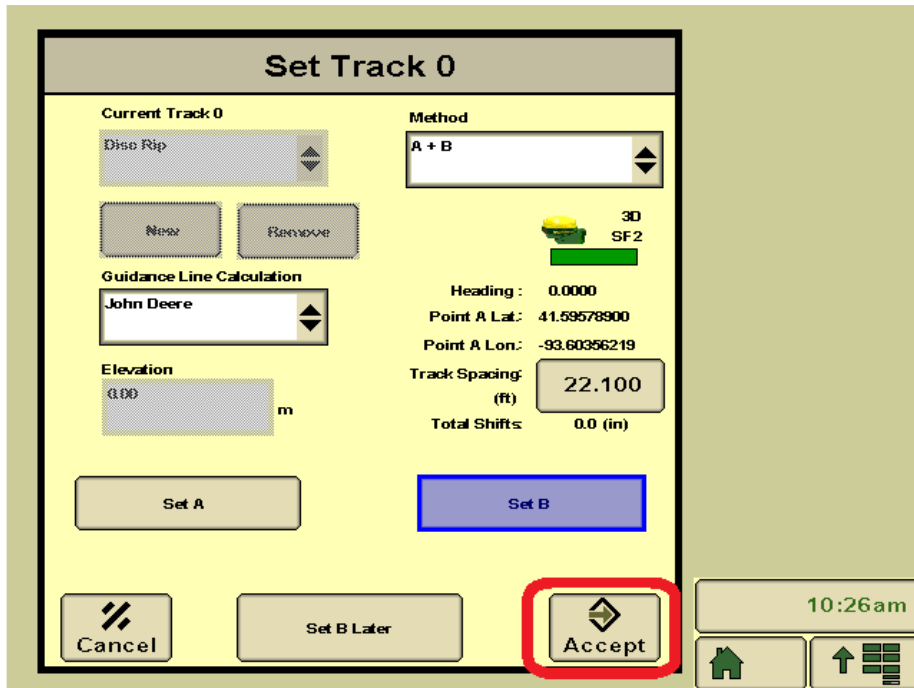


10. Drive the vehicle a minimum of 30 feet and Press “Set B” Button to set point B.

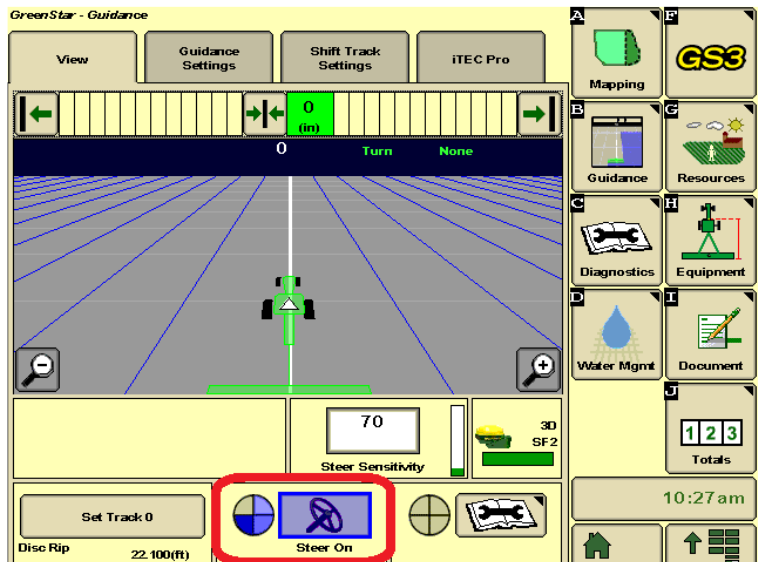
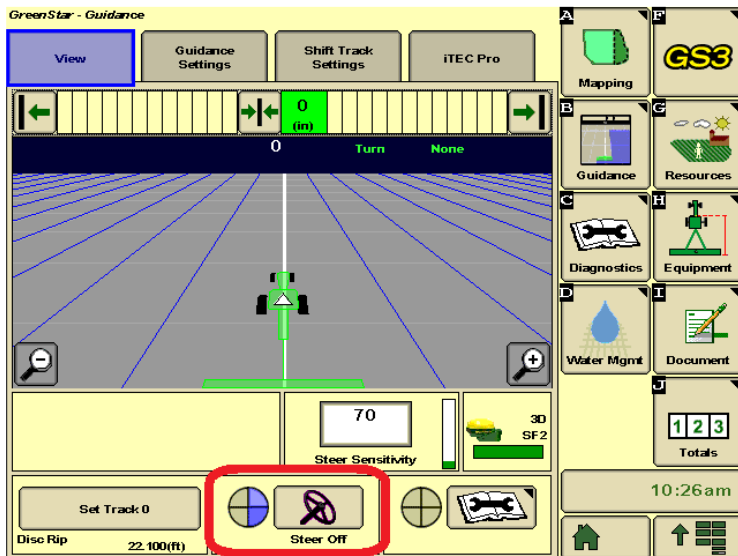




11. Press the "Accept" Button.



12. After you set AB line the 2nd piece of the AutoTrac pie will show up. Press Steer Button to get the 3rd piece of the AutoTrac pie to show up.



13. Drive vehicle close to AB line and press “Resume or Auto” switch to activate AutoTrac. On S-Series combines there is an “Auto” button on joystick. On 70 series combines you will use either the #2 or #3 button on the joystick. ***70 Series combines will not have the “Auto” button.***



14. Once you press the “Resume or Auto” button you will hear an audible tone and the AutoTrac pie will turn green with a big “A” in the center of the pie. This means that AutoTrac is now active.

